

Denny Waters ⑤

Denny Waters has an informal waterside character enhancing the existing lake spur and establishing a landscape setting comprising wet grassland meadows, reeds, water lilies and trees. This area functions as a north south wildlife corridor, the design of which will be informed by the Wetland Parkland planting characteristics.

Mandatory requirements and guidance

- Existing key waterside trees and established habitat **must** be retained
- A key vista towards Denny Abbey **must** be achieved
- A viewing platform **should** be incorporated to capture key views south towards the lake
- The Causeway **must** be a 4m wide path at grade and **should** be of a rural character reflecting its context. See Section 3.5.6 Causeway
- As part of an east west strategic route, pedestrian and cycle movement **must** be accommodated on a 3m wide path. This connects with Rye Gardens to the west along a Community Link, refer to Section 3.5.5 Community Links for further details, and future connections to the east within later phases
- A play space (LEAP with minimum 500m² play area) **must** be provided adjacent to the key movement routes with a 20m buffer zone to surrounding built form
- The lake spur **must** form part of the SuDS strategy, providing attenuation and water treatment
- The planting palette **should** take reference from existing species and have a wetland character with willows, alder and birch. A natural arrangement with individual and small groupings of trees **should** be used to create an informal naturalistic character



Figure 4.76 Location in KP1 in accordance with the Regulatory Plan



Figure 4.78: Indicative landscape proposals - Denny Waters



Cessinger Park, Luxembourg
 Figure 4.77: Good example of a clearly defined route with a subtle intervention to enable interaction with the waters edge

4.2.3 Parks and parklands

Waterbeach Gardens 7

Waterbeach Gardens is formed by two existing woodlands, offering open space and accommodating SuDS attenuation, formal and informal play, within an established setting. The design of this space will be informed by the Urban Parkland planting characteristics. See Section 5.6 Frontage character for guidance on the built form interface.

Mandatory requirements and guidance

- Existing woodland blocks **must** be retained as defined on the Regulatory Plan, which predominately comprises the group of mature Norway Maples. All infected ash trees **must** be removed. See Arboricultural Impact Assessment for further details. Existing trees on the periphery of the open space and where they terminate internal views along adjoining Community Links **should** be retained
- A 4m wide east west primary shared pedestrian and cycle route **must** be accommodated around existing trees
- North south routes towards the lakeside **must** be provided as defined on the Regulatory Plan
- SuDS features **should** provide conveyance and water treatment and **must** be vegetated for biodiversity value
- Natural themed formal playspaces (LEAP and LAP with minimum 500m² and 100m² play areas, respectively) SIPs and community play (such as table tennis or petanque courts) **must** be provided alongside playable space, and an area of open lawn, with woodland and SuDS themes. See Section 4.1.2 Play and Outdoor Sport for more information
- Orchard planting of minimum 0.1ha **should** be included as part of the productive landscape provision
- Orchard tree species **should** include local varieties (no double flowering species) on a 6m spacing grid
- Parkland tree species **should** complement the character of existing trees (Norway Maple, Oak and Lime) and feature trees (London plane) and **should** reflect the urban parkland character
- The parks **should** have a degree of formality with a natural character such as formal lines of mature trees and strong path alignments set within swaths of wildflower areas, vegetated SuDS and mounded landform

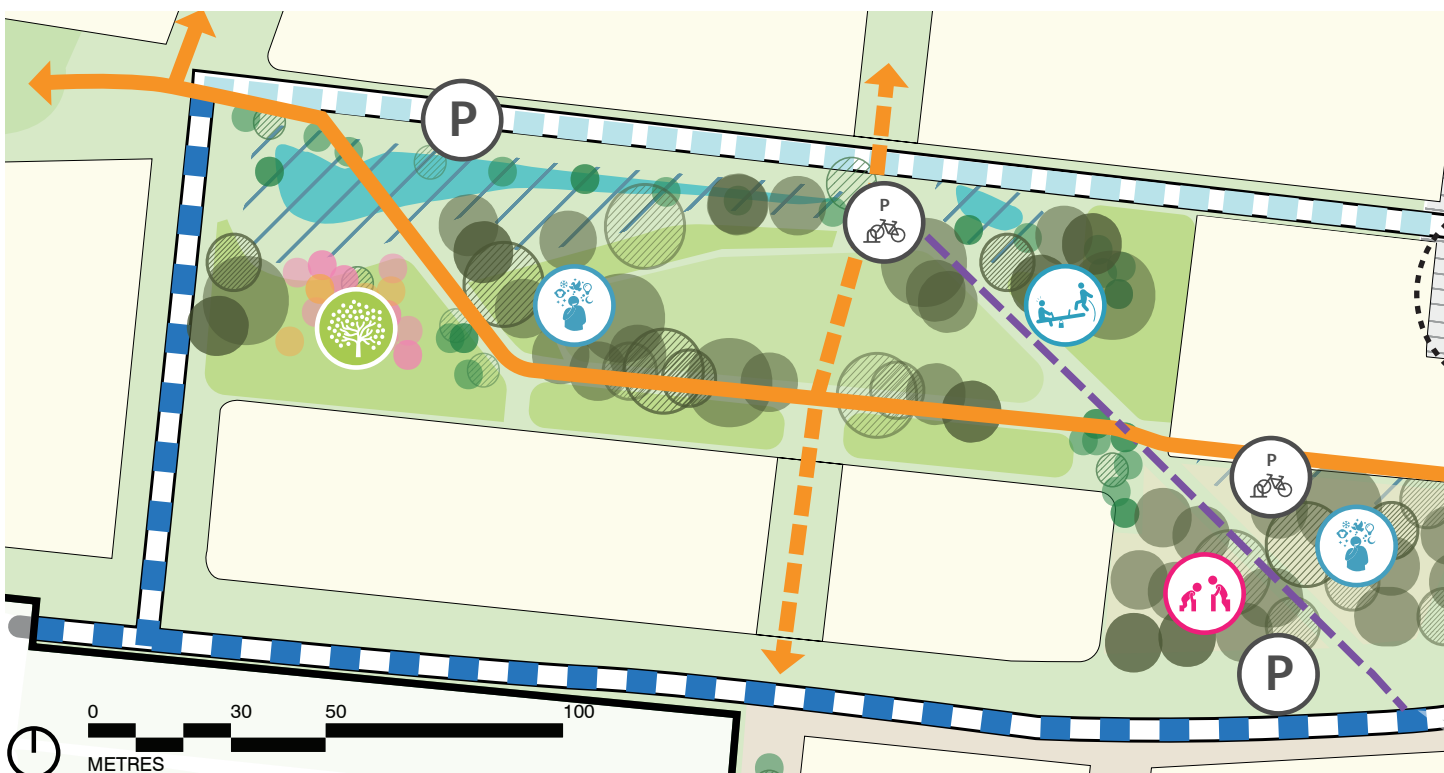


Figure 4.79: Indicative landscape proposals - Waterbeach Gardens